



## History of the Airstream 190 B-Van Motorhome

Airstream broke into the small motorhome market on July 1, 1988, when it produced the first Airstream 190 B-Van. Airstream manufactured the 190 B-Van motorhome from 1988 (model year 1989) until 1999 (model year 2000). The B-Van was 19 feet in length and was built on a Ford E350 Cargo Van chassis. It included such features as a lavatory, convertible couch with seat belts, galley, and over-cab bunk. All of the interior furniture was designed to reflect the "Airstream style" present in its travel trailers. From 1989 to 1996, the standard engine on the B-Van was 351 cubic inches, with the option for a 460 cubic-inch engine. Originally, the fiberglass top, manufactured by Okanagan, had two front windows, but the style was changed to take a single, large front window in 1990.

For the 1997 model year, the B-Van underwent a number of improvements. First, the new engine used was a 6.8-liter Triton V-10 engine, which came standard on all vans. In addition, the floor plan was redesigned: the stove moved to the curbside, creating a six-foot-long galley, and the toilet and shower were combined to create a wet bath. A sink was also added to the wet bath. Airstream added exterior storage to the unit and increased aerodynamics for the cab-over design. According to the advertisement for the 1997 model year, Airstream "made more than 20 great improvements" on the B-Van's design.

The final B-Van was completed on August 1, 1999, bringing the total number of units produced in 11 years to 1393.

## Historical Timeline of the B-Van

### 1988

- First Airstream 190 B-Van produced in Jackson Center, Ohio (model year 1989).
- 351 cubic inch engine (STD) 460 cubic inch engine (OPT)



### 1989

- Design of over-cab bunk changed from two front windows to one (for model year 1990)



### 1991

- B-Van's top remodeled to be slightly smaller

### 1992

- Ford E350 chassis redesigned to include a more streamlined grill pattern



### 1995

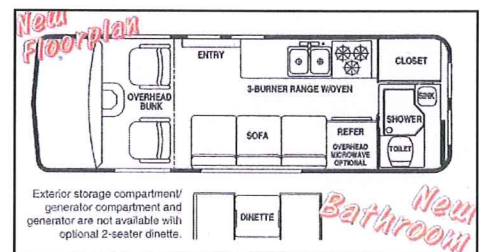
- Floor plan redesigned: stove moved to curbside, refrigerator moved to roadside (for 1996 model year)
- New option for microwave over refrigerator

### 1996

- First B-Van produced with 6.8-liter Triton V-10 engine (now standard on all B-Vans, model year 1997 and newer)



- Lavatory redesigned to create a wet bath with added sink.
- Galley sink moved next to stove to create larger section of counter space.

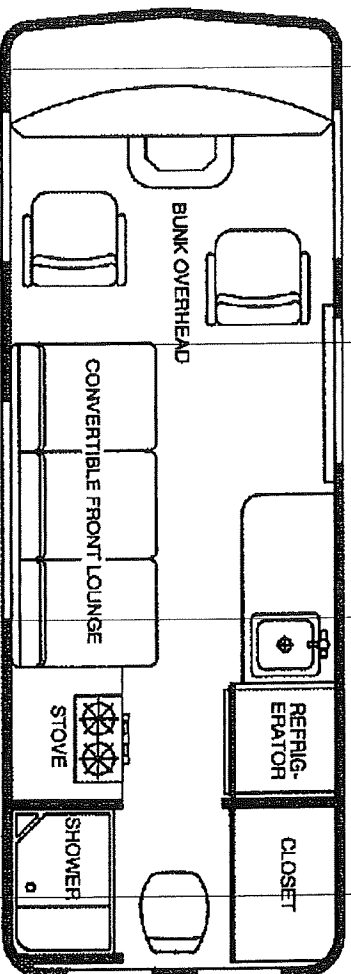


- New option for 2-seater dinette.

### 1999

- Final B-Van completed August 1 (model year 2000).

# 1989 AIRSTREAM 19' TYPE B



## Specifications

### Standard Chassis

Ford 8100 GVWR E250 Cargo Van  
138" wheelbase  
351 cu. in.  
41 gal. (155 L) dual fuel tanks  
354 rear end ratio

### Approximate Dimensions

Length 215"  
Width 79.7"  
Height 111"

### Optional Chassis

Ford 9100 GVWR E350 Cargo Van  
138" wheelbase  
460 cu. in.  
41 gal. (155 L) dual fuel tanks  
354 rear end ratio

## Specifications & Equipment

### Exterior Features

- Aerodynamic raised fiberglass top, color matched to van
- Color coordinated accent paint
- Chrome front & rear bumpers
- Tinted, slide-open safety glass windows w/screens
- Rear ladder
- Rack-type roof antenna w/jack
- Matching fiberglass running boards
- Continental kit w/spare tire & bracket

### Automotive Equipment

- Automatic transmission
- Tilt steering wheel
- Cruise control
- Dash air conditioner
- AM/FM radio w/cassette and speakers
- Convenience group package
- Hi-back bucket seats
- Trailer towing package

### Systems

- 12 volt interior lighting
- 25' power cord 110v service
- 30 amp converter w/12 volt charger
- Pre-wired for roof air conditioning
- 22.4 gallon fresh water
- 6 gal. quick recovery hot water heater
- 18.4 gal. waste water holding tank
- Demand water pump system
- 35# LPG tank
- 12,000 BTU furnace
- 3 cu. ft. Dometic refrigerator
- 2 burner range top
- Power range hood w/light
- 12 volt roof vent
- City water hook-up
- Lockable water tank fill
- Control panel monitoring system

To provide the best possible product, we reserve the right to improve and/or modify the product which may change the features and specifications. Check with your Airstream dealer for updated information and availability.

## Living Area & Construction

- Inner fiberglass liner top w/insulation
- Oak hardwood frames & doors
- Oak vinyl paneling
- Side-walls insulated
- Tub/Shower area w/foldette door
- Rear curbside closet
- Storage below range top cabinet
- Countertop area over refrigerator
- Cabinet storage over galley
- Galley w/drawers (formica countertop)
- Cabinet storage over sofa
- Stainless steel sink w/high rise faucet
- Convertible sofa
- Drop-in table
- 72" x 76" sleeping area over cab
- Bunk ladder
- Carpet throughout
- Vinyl floor covering (bathroom area)
- Deluxe driver & passenger seats
- Trim panels on all doors
- Fire extinguisher
- Gas detector (LPG)
- Sewer drain hose & holder

## Optional Equipment

- Upgrade fabric package
  1. Nutmeg
  2. Sunset
  3. Cameo
- Generator 2.8 KW
- 7,000 BTU 110 volt roof air conditioner
- Wheat strip
- Sport wheel cover
- Towing package (receiver and wiring)
- Awning
- Power seat driver
- Power seat passenger
- Microwave
- (4) Burner range with oven
- 9" color television
- VCR
- Deluxe engine cover console
- Trailer towing mirror extension

Made in the USA





## STANDARD FEATURES 1989 - 190 MOTORHOME

3/1/89

## EXTERIOR FEATURES

AERODYNAMIC RAISED FIBERGLASS TOP, COLOR  
MATCHED TO VAN  
COLOR COORDINATED ACCENT PAINT  
CHROME FRONT & REAR BUMPERS  
TINTED, SLIDE-OPEN SAFETY GLASS  
WINDOWS W/SCREENS  
REAR LADDER  
ROOF RACK-TYPE ANTENNA W/JACK  
MATCHING FIBERGLASS RUNNING BOARDS  
CONTINENTAL KIT W/SPARE TIRE & BRACKET

## AUTOMOTIVE EQUIPMENT

AUTOMATIC TRANSMISSION  
TILT STEERING WHEEL  
CRUISE CONTROL  
DASH AIR CONDITIONER  
AM/FM RADIO/CASSETTE & SPEAKERS  
CONVENIENCE GROUP PACKAGE  
HIGH-BACK BUCKET SEATS

## SYSTEMS

12 VOLT INTERIOR LIGHTING  
25' POWER CORD 110V SERVICE  
30 AMP CONVERTER W/12 VOLT CHARGER  
PRE-WIRED FOR ROOF AIR CONDITIONING  
22.4 GALLON FRESH WATER  
6 GALLON QUICK RECOVERY HOT WATER HEATER  
18.4 GALLON WASTE-GREY WATER HOLDING TANK  
DEMAND WATER PUMP SYSTEM  
35 LB LPG  
12,000 BTU FURNACE  
3 CU FT DOMETIC REFRIGERATOR  
2-BURNER RANGE TOP  
POWER RANGE HOOD W/LIGHT  
12 VOLT ROOF VENT  
CITY WATER HOOK-UP  
LOCKABLE WATER TANK FILL  
CONTROL PANEL MONITORING SYSTEM

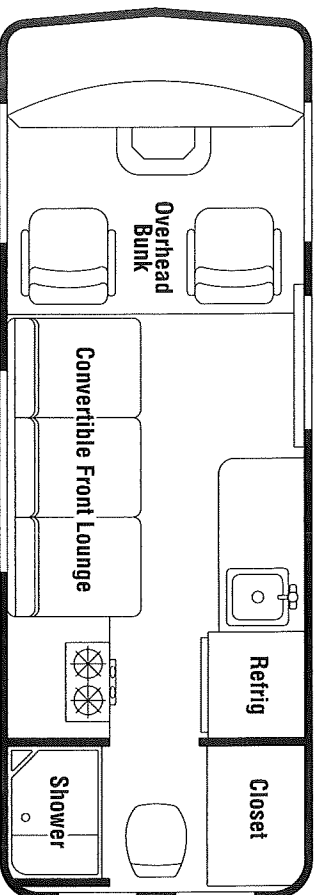
## LIVING AREA &amp; CONSTRUCTION

INNER FIBERGLASS LINER TOP WITH INSULATION  
OAK HARDWOOD FRAMES & DOORS  
OAK VINYL PANELING  
SIDE-WALLS INSULATED  
TUB/SHOWER AREA WITH FOLDETTE  
REAR CURBSIDE CLOSET  
RANGE TOP CABINET STORAGE BELOW  
COUNTERTOP AREA OVER REFRIGERATOR  
CABINET STORAGE OVER SOFA  
STAINLESS STEEL SINK W/HIGH RISE FAUCET  
CONVERTIBLE SOFA WITH SEAT BELTS  
DROP-IN TABLE  
72" X 76" SLEEPING AREA OVER CAB  
BUNK LADDER  
CARPET THROUGHOUT (EXCEPT BATHROOM)  
VINYL FLOOR COVERING (BATHROOM AREA)  
DELUXE DRIVER & PASSENGER SEATS  
TRIM PANELS ON ALL DOORS  
FIRE EXTINGUISHER  
GAS DETECTOR (LPG)  
SEWER DRAIN HOSE & HOLDER  
OZITE CEILING  
MEDICINE CABINET WITH MIRROR

## STANDARD CHASSIS

FORD 9100 GVWR E350 CARGO VAN  
138" WHEELBASE  
41 GAL (155L) DUAL FUEL TANKS  
354 REAR END RATIO

# 1990 AIRSTREAM 19' MOTOR HOME



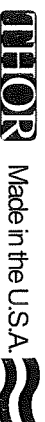
## General Specifications

Standard Chassis	
Ford	9000 Lb. GVWR E350 Cargo Van
	7600 Lb. approx. wt. (with fuel)
	138" wheelbase
	351 cu. in.
	41 gal. dual fuel tanks
	3.54 rear end ratio
	LT-235/85R16 tire size
Approximate Dimensions	
Ford	Length 228"
	Width 75.5"
	Height 113" (with Air Conditioning 119")

Airstream constantly strives to improve its product. All specifications are subject to change without notice. Each vehicle comes with a one year warranty. Printed in U.S.A. © Airstream, Inc. 1990

## AIRSTREAM

1 9 0 S E R I E S



Made in the U.S.A.

419 W. Pike St. Jackson Center OH 45334 Telephone 513 596-6111

## Specifications & Standard Equipment

### Exterior Features

- New Aerodynamic raised fiberglass top, color matched to van with front one piece window
- 1990 exterior graphics
- Chrome front & rear bumpers
- Tinted, slide-open safety glass windows with screens
- Rear ladder
- Rack-type roof antenna with jack
- Color coordinated ground effect running boards
- Continental kit with spare tire & bracket
- Exterior storage or generator compartment
- Center brake light

### Automotive Equipment

- Automatic transmission
- Tilt steering wheel
- Cruise control
- Dash air conditioner
- AM/FM stereo, radio with cassette and speakers
- Convenience group package
- Hi-back bucket seats

### Systems

- 12 volt interior lighting
- 25' power cord for 110v service
- 30 amp converter with 12 volt charger
- Pre-wired for roof air conditioning
- 6 gallon quick recovery hot water heater
- Demand water pump system
- 35# LPG tank
- 12,000 BTU furnace
- 3 cu. ft. Dometic refrigerator
- 2 burner range top
- Power range hood with light
- 12 volt roof vent
- City water hook-up
- Lockable water tank fill
- Control panel monitoring system
- 22.4 gallon fresh water tank
- 16.2 gallon grey water tank
- 16.2 gallon black water tank

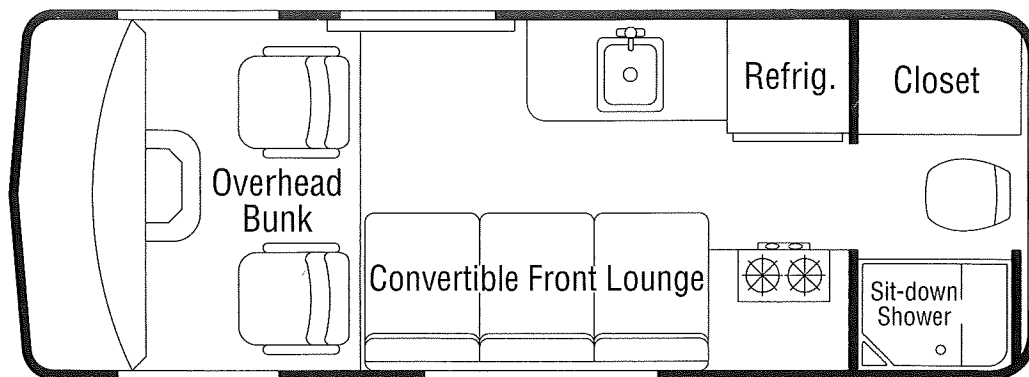
### Living Area and Construction

- Oak hardwood frames and doors
- Oak vinyl paneling
- Side-walls insulated
- Tub/shower area with foldette door
- Rear curbside closet
- Storage below range top cabinet
- Countertop area over refrigerator
- Cabinet storage over galley
- Galley with drawers (formica countertop)
- Cabinet storage over sofa
- Stainless steel sink with high rise faucet
- Convertible sofa with seat belts
- Drop-in table
- 72" x 76" sleeping area over cab
- Bunk ladder
- Carpet throughout (except bathroom)
- Vinyl floor covering (bathroom area)
- Trim panels on all doors
- Fire extinguisher
- Gas detector (LPG)
- Sewer drain hose compartment
- Ozite Ceiling
- Medicine cabinet with mirror

## Optional Equipment

- Fabric Selections: 1. Malibu Sand  
2. Sunset Blue  
3. True Blue
- 460 Ford, 9000 Lb. GVWR, with 4.10 Rear End Ratio
- Generator 2.8 KW
- 11,000 BTU roof air conditioner w/heat strip
- Front Spoiler with Drivers Lights
- Sport wheel cover
- Towing package (receiver and wiring)
- Awning
- Power seat driver
- Power seat passenger
- Microwave
- (4) Burner range with oven
- Deluxe engine cover console
- Trailer towing mirror extension
- Styled aluminum wheels
- Upgrade Flexsteel seat package
- TV Antenna Booster
- Bath Exhaust Fan

# AIRSTREAM 19' MOTORHOME



## Specifications & Standard Equipment

### Standard Chassis (Ford)

- 9400 Lb. GVWR E350 Cargo Van
- 7600 Lb. approx. wt. (with fuel)
- 138" Wheelbase
- 351 cu. in. engine
- 35 gallon fuel tank
- 3.54 rear end ratio
- LT-245/75R x 16E, BSW all season tires

### Dimensions:

- Length: 19'
- Width: 6' 3 1/2"
- Height: 9' 5" (w/Air 9' 11")

### Automotive Equipment

- Automatic transmission/overdrive
- Tilt steering wheel
- Cruise control
- Dash air conditioner
- AM/FM stereo radio w/cassette and speakers
- Convenience group package
- Hi-back bucket seat
- Deluxe engine cover console
- Power mirrors (Silver Exterior)

### Systems

- 12 volt interior lighting
- 35' power cord for 110-volt service
- 30 amp converter w/12-volt charger
- Pre-wired for roof air conditioning
- 6-gal. quick-recovery hot water heater
- Demand water pump system
- 35# LPG tank
- 12,000 BTU furnace
- 3 cu. ft. Dometic® refrigerator (3-way)
- 2-burner range top
- Power range hood w/light
- 12-volt roof vent
- City water hook-up
- Lockable water tank fill
- Control panel monitoring system with LP gauge
- 22.4 gallon fresh-water tank
- 20 gallon grey-water tank
- 21 gallon black-water tank
- Pre-wired for solar battery charger

### Living Area & Construction

- Oak hardwood frames & doors
- Oak vinyl paneling
- Side-walls insulated
- Sit down shower area w/foldette door
- Bath exhaust fan
- Rear curbside closet
- Storage below range top cabinet
- Countertop area over refrigerator
- Cabinet storage over galley
- Galley w/drawers (formica countertop)
- Cabinet storage over sofa
- Stainless steel sink w/high-rise faucet
- 72" x 40" Convertible sofa w/seat belts
- Drop-in table
- 72" x 76" sleeping area over cab
- Bunk ladder
- Carpet throughout (except bathroom)
- Vinyl floor covering (bathroom area)
- Trim panels on all doors
- Fire extinguisher
- Sewer drain hose compartment
- Ozite ceiling
- Medicine cabinet w/mirror
- Reading lights over sofa
- Smoke detector

### Exterior Features

- Aerodynamic raised fiberglass top, color matched to van w/1-piece front window
- Stylish exterior graphics
- Chrome front & rear bumpers
- Tinted, slide-open safety glass windows w/screens
- Rear ladder
- Rack-type roof antenna w/jack
- Color coordinated ground effect running boards
- Continental kit w/spare tire & bracket
- Exterior storage or generator compartment
- Center brake light
- Porch light
- Sport wheel covers

To provide the best possible product, we reserve the right to improve and/or modify the product which may change the features and specifications. Check with your Airstream dealer for updated information and availability.

## Optional Equipment

- Fabric Selections
- 460 cu. in. engine
- 7.3 Liter Diesel (LP generator optional)
- Generator 2.8 KW w/hour meter
- 11,000 BTU roof air conditioner w/heat strip
- Driving lights
- Towing package (receiver and wiring)
- Awning
- Power seat, driver
- Power seat, passenger
- Microwave
- 4-burner range w/oven
- Black shadow aluminum wheels
- Upgrade Flexsteel® seat package
- TV antenna booster w/cable TV and telephone hook-up
- Water purifier w/separate faucet
- Solar battery charger
- Fantastic® roof vent
- CB radio
- Galley flip-up shelf

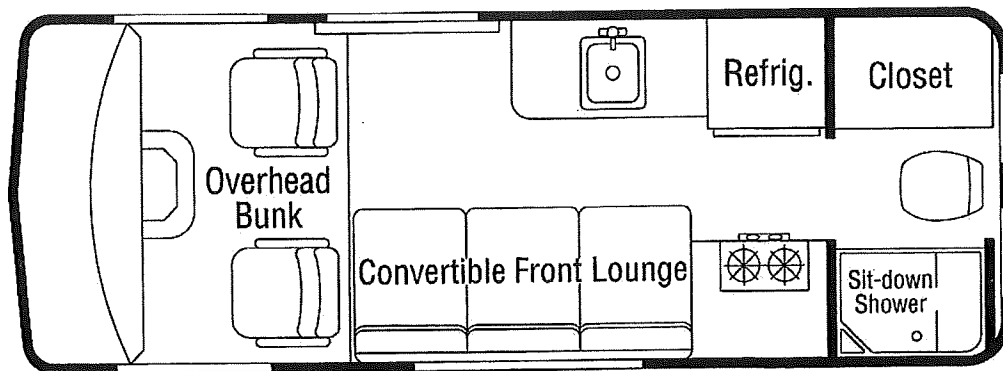
1991



**AIRSTREAM**

419 W. Pike St., Jackson Center, OH 45334 Telephone 513/596-6111

# AIRSTREAM 19' MOTORHOME



## Specifications & Standard Equipment

### Standard Chassis (Ford)

- 9400 Lb. GVWR E350 Cargo Van
- 7600 Lb. approx. wt. (with fuel)
- 138" Wheelbase
- 351 cu. in. engine
- 35 gallon fuel tank
- 3.54 rear end ratio
- LT-245/75R x 16E, BSW all season tires

### Dimensions:

- Length: 19'
- Width: 6' 3 1/2"
- Height: 9' 5" (w/Air 9' 11")

### Automotive Equipment

- Automatic transmission/overdrive
- Tilt steering wheel
- Cruise control
- Dash air conditioner
- AM/FM stereo radio w/cassette and speakers
- Convenience group package
- Hi-back bucket seat
- Deluxe engine cover console
- Power mirrors (Silver Exterior)

### Systems

- 12 volt interior lighting
- 35' power cord for 110-volt service
- 30 amp converter w/12-volt charger
- Pre-wired for roof air conditioning
- 6-gal. quick-recovery hot water heater
- Demand water pump system
- 35# LPG tank
- 12,000 BTU furnace
- 3 cu. ft. Dometic® refrigerator (3-way)
- 2-burner range top
- Power range hood w/light
- 12-volt roof vent
- City water hook-up
- Lockable water tank fill
- Control panel monitoring system with LP gauge
- 22.4 gallon fresh-water tank
- 20 gallon grey-water tank
- 21 gallon black-water tank
- Pre-wired for solar battery charger

### Living Area & Construction

- Oak hardwood frames & doors
- Oak vinyl paneling
- Side-walls insulated
- Sit down shower area w/foldette door
- Bath exhaust fan
- Rear curbside closet
- Storage below range top cabinet
- Countertop area over refrigerator
- Cabinet storage over galley
- Galley w/drawers (formica countertop)
- Cabinet storage over sofa
- Stainless steel sink w/high-rise faucet
- 72" x 40" Convertible sofa w/seat belts
- Drop-in table
- 72" x 76" sleeping area over cab
- Bunk ladder
- Carpet throughout (except bathroom)
- Vinyl floor covering (bathroom area)
- Trim panels on all doors
- Fire extinguisher
- Sewer drain hose compartment
- Ozite ceiling
- Medicine cabinet w/mirror
- Reading lights over sofa
- Smoke detector

### Exterior Features

- Aerodynamic raised fiberglass top, color matched to van w/1-piece front window
- Stylish exterior graphics
- Chrome front & rear bumpers
- Tinted, slide-open safety glass windows w/screens
- Rear ladder
- Rack-type roof antenna w/jack
- Color coordinated ground effect running boards
- Continental kit w/spare tire & bracket
- Exterior storage or generator compartment
- Center brake light
- Porch light
- Sport wheel covers

To provide the best possible product, we reserve the right to improve and/or modify the product which may change the features and specifications. Check with your Airstream dealer for updated information and availability.

## Optional Equipment

- Fabric Selections
- 460 cu. in. engine
- 7.3 Liter Diesel (LP generator optional)
- Generator 2.8 KW w/hour meter
- 11,000 BTU roof air conditioner w/heat strip
- Driving lights
- Towing package (receiver and wiring)
- Awning
- Power seat, driver
- Power seat, passenger
- Microwave
- 4-burner range w/oven
- Black shadow aluminum wheels
- Upgrade Flexsteel® seat package
- TV antenna booster w/cable TV and telephone hook-up
- Water purifier w/separate faucet
- Solar battery charger
- Fantastic® roof vent
- CB radio
- Galley flip-up shelf

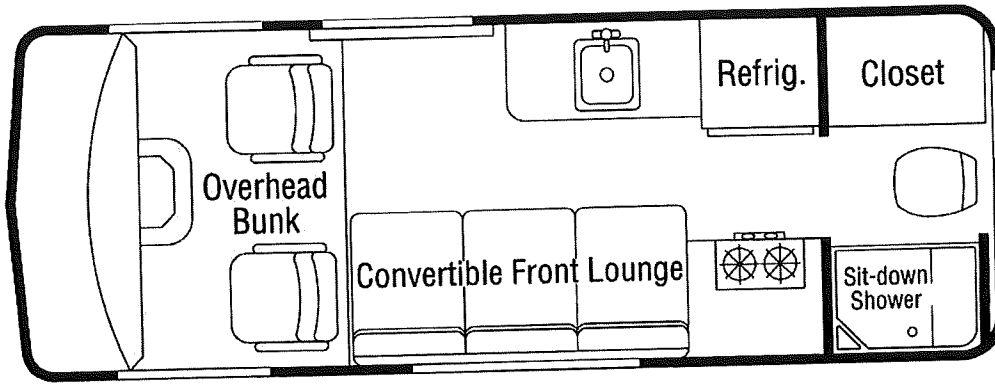
1992



**AIRSTREAM**

419 W. Pike St., Jackson Center, OH 45334 Telephone 513 596-6111

# AIRSTREAM 19' MOTORHOME



## Specifications & Standard Equipment

### Standard Chassis (Ford)

- 9400 Lb. GVWR E350 Cargo Van
- 7600 Lb. approx. wt. (with fuel)
- 138" Wheelbase
- 351 cu. in. engine
- 35 gallon fuel tank
- 3.54 rear end ratio
- LT-245/75R x 16E, BSW all season tires

### Dimensions:

- Length: 19'
- Width: 6' 3 1/2"
- Height: 9' 5" (w/Air 9' 11")

### Automotive Equipment

- Automatic transmission/overdrive
- Tilt steering wheel
- Cruise control
- Dash air conditioner
- AM/FM stereo radio w/cassette and speakers
- Convenience group package
- Hi-back bucket seat
- Deluxe engine cover console
- Power mirrors

### Systems

- 12 volt interior lighting
- 35' power cord for 110-volt service
- 30 amp converter w/12-volt charger
- Pre-wired for roof air conditioning
- 6-gal. water heater/DSI
- Demand water pump system
- 35# LPG tank
- 12,000 BTU furnace
- 3 cu. ft. Dometic® refrigerator (3-way)
- 2-burner range top
- Power range hood w/light
- 12-volt roof vent
- City water hook-up
- Lockable water tank fill
- Control panel monitoring system with LP gauge
- 22.4 gallon fresh-water tank
- 20 gallon grey-water tank
- 21 gallon black-water tank
- Pre-wired for solar battery charger

### Living Area & Construction

- Oak hardwood frames & doors
- Oak vinyl paneling
- Side-walls insulated
- Sit down shower area w/foldette door
- Bath exhaust fan
- Rear curbside closet
- Storage below range top cabinet
- Countertop area over refrigerator
- Cabinet storage over galley
- Galley w/drawers (formica countertop)
- Cabinet storage over sofa
- Stainless steel sink w/high-rise faucet
- 72" x 40" Convertible sofa w/seat belts
- Drop-in table
- 72" x 76" sleeping area over cab
- Bunk ladder
- Carpet throughout (except bathroom)
- Vinyl floor covering (bathroom area)
- Trim panels on all doors
- Fire extinguisher
- Sewer drain hose compartment
- Ozite ceiling
- Medicine cabinet w/mirror
- Reading lights over sofa
- Smoke detector

### Exterior Features

- Aerodynamic raised fiberglass top, color matched to van w/1-piece front window
- Stylish exterior graphics
- Chrome front & rear bumpers
- Tinted, slide-open safety glass windows w/screens
- Rear ladder
- Rack-type roof antenna w/jack
- Color coordinated ground effect running boards
- Continental kit w/spare tire & bracket
- Exterior storage or generator compartment
- Center brake light
- Porch light
- Sport wheel covers

To provide the best possible product, we reserve the right to improve and/or modify the product which may change the features and specifications. Check with your Airstream dealer for updated information and availability.

## Optional Equipment

- Fabric Selections
- 460 cu. in. engine
- 7.3 Liter Diesel (LP generator optional)
- Generator 2.8 KW w/hour meter
- 11,000 BTU roof air conditioner w/heat strip
- Driving lights
- Towing package (receiver and wiring)

- Awning
- Power seat, driver
- Power seat, passenger
- Microwave
- 4-burner range w/oven
- Black shadow aluminum wheels
- Upgrade Flexsteel® seat package

- TV antenna booster w/cable TV and telephone hook-up
- Water purifier w/separate faucet
- Fantastic® roof vent
- CB radio
- Galley flip-up shelf
- 110 V exterior outlet

1993

**THOR**  
AMERICA'S BEST RV VALUE

REVISED 10/92

**AIRSTREAM**

419 W. Pike St., Jackson Center, OH 45334 Telephone 513/596-6111



# THE AIRSTREAM 190 MOTORHOME

The Airstream 190 is truly the all-purpose RV for today's demanding lifestyles: it's a deluxe 19' motorhome, a spacious second car, and a powerful tow vehicle all in one. Full interior headroom, a complete kitchen and bath, and sleeping accommodations for four mean your family can travel in comfort and security on weekend trips or extended tours. And, just like full-sized motorhome, your interest payment may be tax deductible. Best of all, it's handcrafted by Airstream, so you know you're getting the quality and value that have made Airstream a legend for over 60 years.

# 1994

**THEIOR**  
AMERICA'S BEST RV VALUE

## Standard Chassis (Ford)

- 9400 lb. GVWR E350 Cargo Van
- 7600 lb. approx. wt. (with fuel)
- 138" Wheelbase
- 357 cu. in. engine
- 35-gallon fuel tank
- 3.54 rear-end ratio
- LT-245/75R x 16E, BSW all season tires

## Dimensions:

- Length: 19' 8"
- Width: 6' 3 1/2"
- Height: 9' 5" (w/Air 9' 11")

## Automotive Equipment

- Automatic transmission/overdrive
- Tilt steering wheel
- Cruise control
- Dash air conditioner
- AM/FM stereo radio w/cassette and speakers
- Convenience group package
- Hitchback bucket seat
- Deluxe engine cover console
- Power mirrors
- Air bag in steering wheel (195 Models)
- 4-wheel antiflock braking system

## Systems

- 12-volt interior lighting
- 35' power cord for 110-volt service
- 30 amp converter w/12-volt charger
- Pre-wired for roof air conditioning
- 6-gal. water heater/DSI
- Demand water pump system
- 9.8-gal. LPG tank
- 12,000 BTU furnace
- 3 cu. ft. Dometic® refrigerator (3-wg.)
- 2-burner range top
- Power range hood w/light
- 12-volt roof vent
- City water hook-up
- Lockable water tank fill
- Control panel monitoring system with LP gauge
- 22.4-gallon fresh water tank
- 20-gallon grey water tank
- 21-gallon black water tank
- Pre-wired for solar battery charger

## Living Area & Construction

- Oak hardwood frames & doors
- Oak vinyl paneling
- Side walls insulated
- Sit down shower area w/foldette door
- Bath exhaust fan
- Rear curbside closet
- Storage below range top, cabinet
- Countertop area over refrigerator
- Cabinet storage over galley
- Galley w/drawers, Formica countertop
- Cabinet storage over sofa
- Stainless steel sink w/high-rise faucet
- 72" x 40" Convertible sofa w/seat belts
- Drop-in table
- 72" x 76" sleeping area over cab
- Bunk ladder
- Carpet throughout (except bathroom)
- Vinyl floor covering (bathroom area)
- Trim panels on all doors
- Fire extinguisher
- Sewer drain hose compartment
- Ozite ceiling
- Medicine cabinet w/mirror
- Reading lights over sofa
- Smoke detector
- Vinyl Ceiling w/Ozite Walls

## Exterior Features

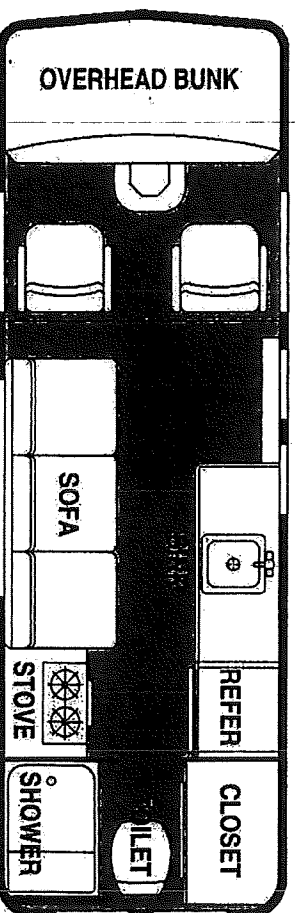
- Aerodynamic raised fiberglass top, color matched to van w/1-piece front window
- Stylish exterior graphics
- Chrome front & rear bumpers
- Tinted, slide-open safety glass
- Windows w/screens
- Rear ladder
- Rack-type roof antenna w/lock

- Color coordinated ground effect running boards
- Continental kit w/spare tire & bracket
- Exterior storage or generator compartment
- Center brake light
- Porch light
- Sport wheel covers

## Options

- Fabric Selections
- 460 cu. in. engine
- Double Sink
- Generator 2.8 KW w/hour meter
- 11,000 BTU roof air conditioner w/heat strip
- Driving lights
- Towing package (receiver and wiring)
- Awning
- Power seat—driver
- Power seat—passenger
- Microwave
- 3-burner range w/oven
- Black shadow aluminum wheels
- Upgrade Flexsteel® seat package
- TV antenna booster w/cable TV and telephone hook-up
- Water purifier w/separate faucet
- Fantastic® roof vent
- CB radio
- Galley flip-up shelf
- 110-V exterior outlet
- Slow-down table

Since Airstream constantly strives to improve its products, All specifications are subject to change without notice.



This brochure is printed on recycled paper as part of Thor's corporate effort to minimize waste and conserve our natural resources. Providing safe, fuel efficient recreational vehicles is Thor's way of further demonstrating our role as the industry leader in safeguarding our nation's environment.

**AIRSTREAM**  
419 W. Pike St • Jackson Center, OH 45365 • (513) 596-6111



# THE AIRSTREAM 190 MOTORHOME

The Airstream 190 is truly the all-purpose RV for today's demanding lifestyles. It's a deluxe 19' motorhome, a spacious second car, and a powerful tow vehicle all in one. Full interior headroom, a complete kitchen and bath, and sleeping accommodations for four mean your family can travel in comfort and security on weekend trips or extended tours. And, just like full-sized motorhome, your interest payment may be tax deductible. Best of all, it's handicapped by Airstream, so you know you're getting the quality and value that have made Airstream a legend for over 60 years.

# 1995

## Standard Chassis (Ford)

- 9400 lb. GVWR E350 Cargo Van
- 7600 lb. approx. wt. (with fuel)
- 138" Wheelbase
- 351 cu. in. engine
- 35-gallon fuel tank
- 3.54 rear end ratio
- LT245/75R x 16E BSW all season tires

## Dimensions:

- Length: 19' 8"
- Width: 6' 3 1/2"
- Height: 9' 5" (w/Air 9' 11")

## Automotive Equipment

- Automatic transmission/overdrive
- Tilt steering wheel
- Cruise control
- Dash air conditioner
- AM/FM stereo radio w/ cassette and speakers
- Convenience group package
- Hi-back bucket seat
- Deluxe engine cover console
- Power mirrors
- Air bag in steering wheel (195 Models)
- 4-wheel anti-lock braking system

## Systems

- 12-volt interior lighting
- 35' power cord for 110-volt service
- 30 amp converter w/12-volt charger
- Pre-wired for roof air conditioning
- 6-gal. water heater/DSI
- Demand water pump system
- 9.8-gal. LPG tank
- 12,000 BTU furnace
- 3 cu. ft. Dometic® refrigerator (3-way)
- 2-burner range top
- Power range hood w/light
- 12-volt roof vent
- City water hookup
- Lockable water tank fill
- Control panel monitoring system with LP gauge
- 22.4-gallon fresh water tank
- 20-gallon grey water tank
- 21-gallon black water tank
- Pre-wired for solar battery charger

## Living Area & Construction

- Oak hardwood frames & doors
- Oak vinyl paneling
- Sideswells insulated
- Sit-down shower area w/foldable door
- Bath exhaust fan
- Rear outside clothes
- Storage below range top, cabinet
- Countertop area over refrigerator
- Cabinet storage over galley
- Galley w/drawers, (formed countertop)
- Cabinet storage over sofa
- Stainless steel sink w/high-rise faucet
- 72" x 40" Convertible sofa w/seat belts
- Drop-in table
- 72" x 76" sleeping area over cab
- Bunk ladder
- Carpet throughout (except bathroom)
- Vinyl floor covering (bathroom area)
- Trim panels on all doors
- Fire extinguisher
- Sewer drain hose compartment
- O-zite ceiling
- Medicine cabinet w/mirror
- Reading lights over sofa
- Smoke detector
- Vinyl Ceiling w/O-zite Walls
- Aerodynamic raised fiberglass top, color matched to van w/1-piece front window
- Stylish exterior graphics
- Chrome front & rear bumpers
- Tinted, slide-open safety glass
- Windows w/screens
- Rear ladder
- Rack-type roof antenna w/jack

## Exterior Features

- Aerodynamic raised fiberglass top, color matched to van w/1-piece front window
- Stylish exterior graphics
- Chrome front & rear bumpers
- Tinted, slide-open safety glass
- Windows w/screens
- Rear ladder
- Rack-type roof antenna w/jack

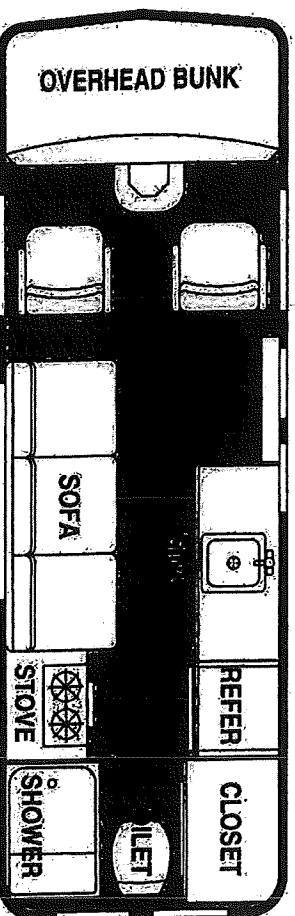
## Options

- Color coordinated ground effect running boards
- Continental kit w/spare tire & bracket
- Exterior storage or generator compartment
- Center brake light
- Patch light
- Sport wheel covers

## Options

- Fabric Selections
- 460 cu. in. engine
- Double Sink
- Generator 2.8 KW w/hour meter
- 11,000 BTU roof air conditioner w/heat strip
- Driving lights
- Towing package (receiver and wiring)
- Awning
- Power seat-driver
- Power seat-passenger
- Microwave
- 3-burner range w/oven
- Black shadow aluminum wheels
- Upgrade Flexsteel® seat package
- TV antenna booster w/cable TV and telephone hookup
- Water purifier w/separate faucet
- Fontastic® roof vent
- CB radio
- Galley flip-up shelf
- 110V exterior outlet
- Slow-a-way table

**Get a  
15,000 LBS**



Since Airstream constantly strives to improve its products, All specifications are subject to change without notice.

**AIRSTREAM**  
AMERICA'S BEST RV VALUE

This brochure is printed on recycled paper as part of Thor's corporate effort to minimize waste and conserve our natural resources. Providing safe, fuel efficient recreational vehicles is Thor's way of further demonstrating our role as the industry leader in safeguarding our nation's environment.

**AIRSTREAM**  
419 W. Pike St • Jackson Center, OH 45365 • (513) 586-6111

**EXTERIOR FEATURES**

Aerodynamic Raised Fiberglass Top w/Front 1 pc.  
Window, Color Matched To Van  
Exterior Graphics  
Chrome Front & Rear Bumpers  
Tinted, Slide-Open Safety Glass Windows w/Screens  
Rear Ladder  
Roof Rack-Type Antenna w/Jack  
Color Coordinated Ground Effect Running Boards  
Continental Kit w/Spare Tire & Bracket  
Exterior Storage/Generator Compartment  
Center Brake Light  
Sport Wheel Covers

**AUTOMOTIVE EQUIPMENT**

Swing Out Glass Side, Rear, Cargo Doors  
Windshield Wipers, Interval  
Power Door Locks & Windows  
Tilt Steering Wheel  
Cruise Control  
Dash Air Conditioner  
AM/FM/Cassette & Speakers  
Convenience Group Package  
Hi-Back All Fabric Seats  
Deluxe Engine Cover Console  
Drivers Side Air Bag

**SYSTEMS**

12 Volt Interior Lighting  
25' Power Cord 110V Service  
30 Amp Converter w/12 Volt Charger  
Pre-Wired For Roof Air Conditioning  
22.4 Gallon Fresh Water  
6 Gallon Quick Recovery Hot Water Heater  
20 Gallon Grey Water Tank  
21 Gallon Black Water Tank  
Demand Water Pump System  
9.8 Gallon LPG Tank  
12,000 BTU Furnace  
3 Cu. Ft. Dometic® Refrigerator  
2-Burner Range Top  
Power Range Hood w/Light  
12 Volt Roof Vent  
City Water Hook-Up  
Lockable Water Tank Fill  
Control Panel Monitoring System  
Porcn Light  
Pre-Wire for Solar Battery Charger

**LIVING AREA & CONSTRUCTION**

Oak Hardwood Frames & Doors  
Oak Vinyl Paneling  
Insulated Side-Walls  
Tub/Shower Area w/Foldette Door  
Bathroom Exhaust Fan  
Rear C.S. Closet  
Range Top w/Pan Storage Below  
Countertop Area Over Refrigerator  
Cabinet Storage Over Sofa  
Stainless Steel Sink w/High-Rise Faucet  
Convertible Sofa w/Seat Belts  
Drop-In Table  
72" x 76" Sleeping Area Over Cab  
Bunk Ladder  
Carpet Throughout (Except Bathroom)  
Vinyl Floor Covering (Bathroom Area)  
Deluxe Driver & Passenger Seats  
Trim Panels on All Doors  
Fire Extinguisher  
Sewer Drain Hose & Holder  
Ozite Ceiling  
Medicine Cabinet w/Mirror

**STANDARD CHASSIS**

Ford 9300 GVWR E350 Cargo Van  
w/Automatic 4-Speed Transmission w/Overdrive  
138" Wheelbase  
35 Gallon (132.5L) Fuel Tank  
3.54 Rear End Ratio  
Handling Package  
130 Amp Alternator  
Insulation Package, Deluxe  
LT 245/75R X 16E BSW All-Season Tires  
Anti-Lock Brakes

1996

# THE AIRSTREAM 190 MOTORHOME

The Airstream 190 is truly the all-purpose RV for today's demanding lifestyles: it's a deluxe 19' motorhome, a spacious second car, and a powerful tow vehicle all in one. Full interior headroom, a complete kitchen and bath, and sleeping accommodations for four mean your family can travel in comfort and security on weekend trips or extended tours. And, just like a full-sized motorhome, your interest payment may be tax deductible. Best of all, it's handcrafted by Airstream, so you know you're getting the quality and value that have made Airstream a legend for over 60 years.

**Warning:** This information is intended as a guide only. Weights for individual vehicles may vary. Consult your Owner's manual for complete loading, weighing & towing instructions.

## 1996 Model Year B-Van Specifications

Chassis	Ford
GVWR—lbs. (Gross Vehicle Weight Rating)	4,200
GVWR—lbs. Rear (Gross Vehicle Weight Rating)	6,084
GVWR—E350 Cargo Van—lbs. (Gross Vehicle Weight Rating)	9,400
GCWR—lbs. (Gross Combined Weight Rating)	11,500
UVW—with Fuel—lbs. (Unloaded Vehicle Weight)	8,000
NCC—lbs. (Net Carrying Capacity)	1,400
WHEELBASE	138"
ENGINE (cubic inches)	351
FUEL TANK (gallons)	35
REAR END RATIO	3.54
TIRES, ALL-SEASON	LT-245/75R x 16E
EXTERIOR LENGTH	19' 8"
EXTERIOR WIDTH	6' 8"
EXTERIOR HEIGHT	9' 5"
EXTERIOR HEIGHT WITH AIR CONDITIONER	9' 11"

## Automotive Equipment

- Automatic transmission/overdrive
- Tilt steering wheel
- Cruise control
- Dash air conditioner
- AM/FM stereo radio w/ cassette and speakers
- Convenience group package
- Hi-back bucket seat
- Deluxe engine cover console
- Power mirrors
- Air bag in steering wheel
- 4-wheel anti-lock braking system

## Systems

- 22.4-gallon fresh water tank
- 20-gallon grey water tank
- 21-gallon black water tank
- 12-volt interior lighting
- 35' power cord for 110-volt service
- 30-amp converter w/12-volt charger
- Pre-wired for roof air conditioning
- 6-gal. water heater/DSI
- Demand water pump system
- 9.8-gal. LPG tank
- 12,000 BTU furnace
- 3 cu. ft. Dometic® refrigerator (3-way)
- 2-burner range top

- Power range hood w/light
- 12-volt roof vent
- City water hook-up
- Lockable water tank fill
- Control panel monitoring system with LP gauge in range hood
- Pre-wired for solar battery charger

## Living Area & Construction

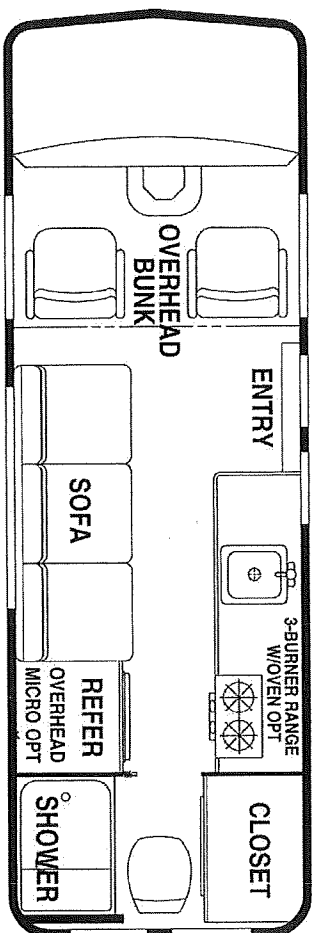
- Oak hardwood frames & doors
- Oak vinyl paneling
- Side-walls insulated
- Sit down shower area w/foldable door
- Bath exhaust fan
- Rear curbside closet
- Storage below range top cabinet
- Cabinet storage/TV shelf over galley
- NEW! 6' 1 1/2" Galley w/drawers (formica countertop)
- Refrigerator cabinet w/opt. microwave above, additional storage above microwave cabinet
- Cabinet storage over sofa
- Stainless steel sink w/faucet
- 72" x 40" Convertible sofa w/seat belts
- Drop-in table
- 72" x 76" sleeping area over cab

- Bunk ladder
- Carpet throughout (except bathroom)
- Vinyl floor covering (bathroom area)
- Trim panels on all doors
- Fire extinguisher
- Sewer drain hose compartment
- Medicine cabinet w/mirror
- Reading lights over sofa
- Smoke detector
- Vinyl ceiling w/Ozite walls

## Exterior Features

- Aerodynamic raised fiberglass top, color matched to van w/1-piece front window
- Stylish exterior graphics
- Chrome front & rear bumpers
- Tinted, slide-open safety glass
- Windows w/screens
- Rear ladder
- Rack-type roof antenna w/jack
- Color coordinated ground effect running boards
- Continental kit w/spare tire & bracket
- Exterior storage or generator compartment
- Center brake light
- Porch light
- Sport wheel covers
- Fabric selections
- 460 cu. in. engine, GCWR 15,000 lbs.
- Double sink
- Generator 2.8 KW w/hour meter
- 11,000 BTU roof air conditioner w/heat strip
- 2nd coach battery
- Driving lights
- Towing package (receiver and wiring)
- Awning
- Power seat—driver
- Power seat—passenger
- Compact microwave
- 3-burner range w/oven
- Upgrade hi-back seat
- TV antenna booster w/cable TV and telephone hook-up
- Water purifier w/separate faucet
- Fan-Tastic® roof vent
- CB radio
- Galley flip-up shelf (Galley length 7' 1 1/2")
- 110-V exterior outlet
- Slow-a-way table

Since Airstream constantly strives to improve its product, all specifications are subject to change without notice.



**Vehicle Loading**—Every effort has been made to provide the greatest number of options for the motorhome owner. Along with these choices comes the responsibility to manage the loads that are imposed by the choices so that they remain within the manufacturer's specified chassis weight limits. Do not overload the motorhome.

**Dry weights** based on standard features; optional equipment not included. Carrying capacity determined by subtracting dry gross weight from GVWR and includes fluids, options and cargo. Liquid capacities and weights are approximations only.

**THOR**  
AMERICA'S BEST RV VALUE



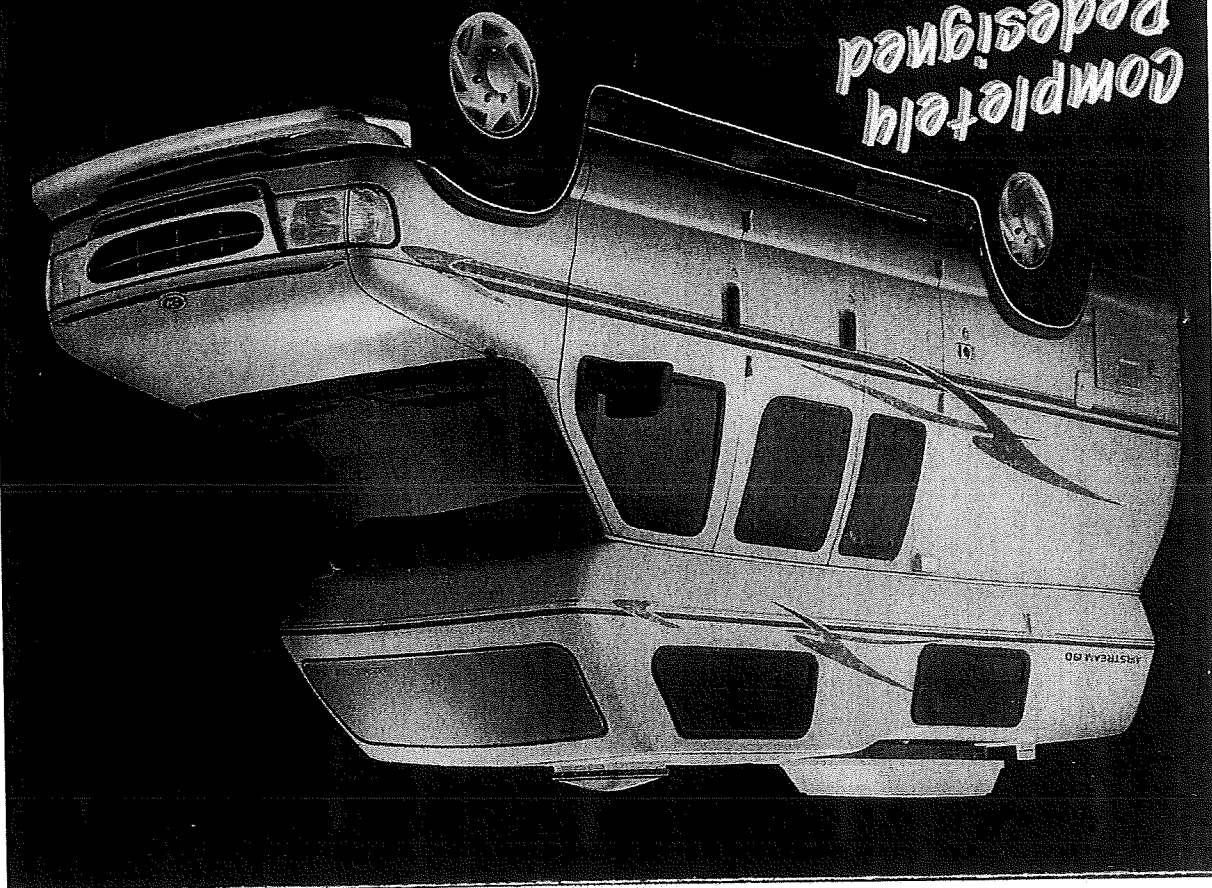
This brochure is printed on recycled paper as part of Thor's corporate effort to minimize waste and conserve our natural resources. Providing safe, fuel efficient recreational vehicles is Thor's way of further demonstrating our role as the industry leader in safeguarding our nation's environment.

# AIRSTREAM

419 W. Pike St • Jackson Center, OH 45334 • (513) 596-6111

# AIRSTREAM 190

Completely redesigned



## Check Out All These Great Features!

### AUTOMOTIVE EQUIPMENT

- NEW! Ford V-10 Triton Engine
- NEW! Passenger air bag
- Automatic transmission/overdrive
- Tilt steering wheel
- Cruise control
- Dash air conditioner
- AM/FM stereo radio w/cassette and speakers
- Convenience group package
- Hi-back bucket seat
- Deluxe engine cover console
- Power mirrors
- Air bag in steering wheel
- 4-wheel anti-lock braking system

### SYSTEMS

- NEW! 22.4-gal. Fresh water tank
- NEW! 27.5-gal. Grey water tank
- NEW! 9-gal. Black water tank
- NEW! Heated holding tanks
- 12-volt interior lighting
- 110-V exterior outlet
- 35' power cord for 110-volt service
- 30-amp converter w/12-volt charger
- 11,000 BTU roof air conditioner w/heat strip
- 6-gal. water heater/DSI
- Demand water pump system
- 9.8-gal. LPG tank
- 12,000 BTU furnace
- 3 cu. ft. Dometic® refrigerator

### (3-way)

- 3-burner range w/oven
- Power range hood w/light
- City water hook-up
- Lockable water tank fill
- Control panel monitoring system with LP gauge in range hood
- TV antenna booster w/cable TV and telephone hook-up
- TV antenna mounted in roof
- Pre-wired for solar battery charger
- Pre-wire generator kit

### LIVING AREA & CONSTRUCTION

- NEW! Swivel passenger Seat
- NEW! Rear curbside closet
- NEW! 6' 1 1/2" Galley w/drawers (formica countertop)
- NEW! Fitted foam flooring
- NEW! Expandable curtains
- NEW! Larger Sewer drain hose compartment
- NEW! Larger medicine cabinet w/mirrors
- NEW! Fiberglass wet shower w/sink
- Power seat-driver
- Oak hardwood frames & doors
- Oak vinyl paneling
- Side-walls insulated
- Foldette door
- Bath exhaust fan

- Cabinet storage/TV shelf over galley
- Refrigerator cabinet w/opt. microwave above, additional storage above microwave cabinet
- Cabinet storage over sofa
- Stainless steel sink w/faucet
- 72" x 40" Convertible sofa w/seat belts
- Double sink
- Dining table w/o pedestal
- Galley flip-up shelf (Galley length 7' 1 1/2")
- Sleeping area over cab
- Bunk ladder
- Carpet throughout
- Trim panels on all doors
- Fire extinguisher
- Reading lights over sofa
- Smoke detector
- Vinyl ceiling w/Ozite walls
- Fan-Tastic® roof vent w/wall thermostat

### EXTERIOR FEATURES

- NEW! Stylish exterior graphics
- NEW! Aerodynamic raised fiberglass top, color matched to van w/1-piece front window
- NEW! Color coordinated ground effect running boards
- NEW! Spare tire & bracket inside rear doors
- NEW! Roadside exterior storage

### in running board below floor

- NEW! Center brake light
- Chrome front & rear bumpers
- Tinted, slide-open safety glass
- Windows w/screens
- Towing package (receiver and wiring)
- Exterior storage or generator compartment
- Porch light
- Sport wheel covers

### OPTIONS

- Fabric selections
- Generator 2.8 KW w/hour meter
- Awning
- Compact microwave
- California emission engine

*Since Airstream constantly strives to improve its product, all specifications are subject to change without notice.*

**Vehicle Loading** - Every effort has been made to provide the greatest number of options for the motorhome owner. Along with these choices comes the responsibility to manage the loads that are imposed by the choices so that they remain within the manufacturer's specified chassis weight limits. Do not overload the motorhome.

**Dry weights** based on standard features; optional equipment not included. Carrying capacity determined by subtracting dry gross weight from GVWR and includes fluids, options and cargo. Liquid capacities and weights are approximations only.



This brochure is printed on recycled paper as part of Thor's corporate effort to minimize waste and conserve our natural resources. Providing safe, fuel efficient recreational vehicles is Thor's way of further demonstrating our role as the industry leader in safeguarding our nation's environment.



**THOR**  
AMERICA'S BEST RV VALUE

**AIRSTREAM**

419 W. Pike St. • P.O. Box 629 • Jackson Center, OH 45334-0629 • 937-596-6111

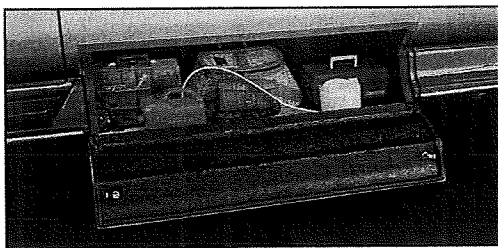
1997





## Class "A" Features—B-Van Convenience!

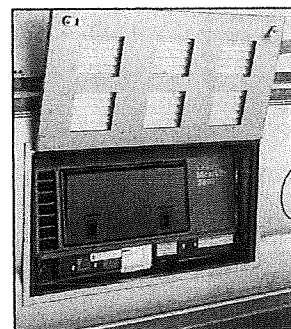
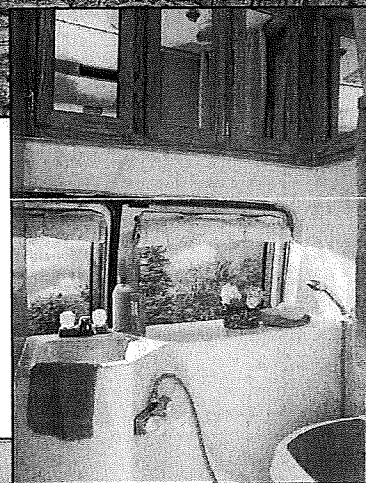
The Airstream 190 is truly the all-purpose vehicle for today's demanding lifestyles: a deluxe 19' motorhome, a spacious second car, and a powerful tow vehicle. Full interior headroom, a complete kitchen and bath, and sleeping for four means your family can travel in comfort and security on weekend trips or extended tours. And we've made more than 20 great improvements, including an all-new bathroom, exterior storage, and a more aerodynamically efficient cab-over design. **And, of course, the Airstream 190 is covered by Thor's exclusive "2+2" warranty; 2-year structural and 2 years on major components.**



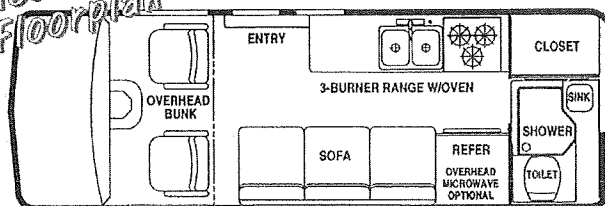
### 1997 MODEL YEAR B-VAN SPECIFICATIONS

CHASSIS	FORD
GVWR—lbs. Front (Gross Vehicle Weight Rating)	3,800
GVWR—lbs. Rear (Gross Vehicle Weight Rating)	6,084
GVWR—E350 Cargo Van—lbs. (Gross Vehicle Weight Rating)	9,400
GCWR—lbs. (Gross Combined Weight Rating)	15,000
UVW—with Fuel—lbs. (Unloaded Vehicle Weight)	7,940
NCC—lbs. (Net Carrying Capacity)	1,460
WHEELBASE	138"
ENGINE [cubic inches]	6.8L SEFI TRITON V-10
FUEL TANK [gallons]	35
REAR END RATIO	3.55
TIRES, ALL-SEASON	LT-245/75R x 16E
EXTERIOR LENGTH	19' 4"
EXTERIOR WIDTH	6' 8"
EXTERIOR HEIGHT	9' 5"
EXTERIOR HEIGHT WITH AIR CONDITIONER	9' 11"

**Warning:** This information is intended as a guide only. Weights of individual vehicles may vary. Consult your Owner's manual for complete loading, weighing & towing instructions.



*New Floorplan*

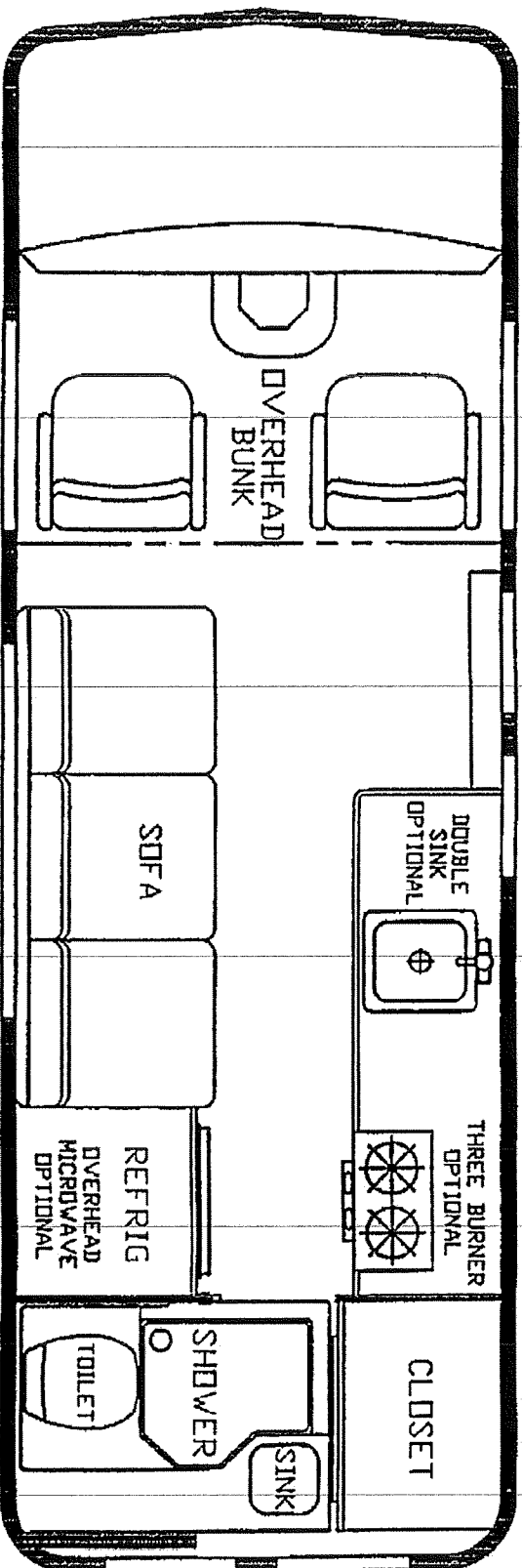


Exterior storage compartment/generator compartment and generator are not available with optional 2-seater dinette.

*New Bathroom*

1997

# INTRODUCING THE 1997 NEW DESIGN - 190 B-VAN *by Airstream*



AIRSTREAM, INC. • 419 W. Pike St. • Jackson Center, OH 45334 • 937/596-6111

## 1998 - AIRSTREAM "190" MOTORHOME STANDARD FEATURES

# AIRSTREAM

419 West Pike Street  
Jackson Center, OH 45334  
937-596-6111

### CHASSIS

- Ford 9400 GVWR E350 Cargo Van w/Automatic 4-Speed Transmission w/Overdrive
- 138" Wheelbase
- 35 Gallon (132.5L) Fuel Tank
- 3.54 Rear End Ratio
- Handling Package
- 130 Amp Alternator
- Insulation Package, Deluxe
- LT 245/75R X 16E BSW All Season Tires
- Anti-Lock Brakes - 4 Wheels

### EXTERIOR FEATURES

- Towing Package
- 110V Exterior Outlet
- Aerodynamic Raised Fiberglass Top with Front 1-Pc. Window - Color Matched To Van
- Exterior Graphics
- Chrome Front & Rear Bumpers
- Tinted, Slide-Open Safety Glass Windows w/Screens
- Color Coordinated Ground Effect Running Boards
- Spare Tire & Bracket Located Inside Rear Door
- Roadside Exterior Storage Compartment Below Floor
- Center Brake Light
- Sport Wheel Covers

### AUTOMOTIVE EQUIPMENT

- Swing Out Glass on Side Front Cargo Door
- Windshield Wipers, Interval
- Power Door Locks & Windows
- Tilt Steering Wheel
- Cruise Control
- Dash Air Conditioner
- AM/FM/Cassette & Speakers
- Convenience Group Package
- Deluxe Engine Cover Console
- Driver/Passenger Air Bags

### SYSTEMS

- 11,000 BTU Air Conditioner w/Heat Strip
- Fantastic Roof Vent
- Generator Prep Kit w/o Hour Meter
- TV Antenna Mounted in Roof
- 12 Volt Interior Lighting
- 35' Power Cord 110V Service
- 30 Amp Converter w/12 Volt Charger
- 6 Gallon Quick Recovery Hot Water Heater
- 22.4 Gallon Fresh Water
- 21.2 Gallon Grey Water Tank
- 16.8 Gallon Black Water Tank
- Demand Water Pump System
- 9.8 Gallon LPG Tank
- 12,000 BTU Furnace
- 3 cu. ft. Refrigerator
- Lockable Water Tank Fill
- Power Range Hood w/Light & Control Panel
- City Water Hook-Up
- Porch Light
- Pre-Wire For Solar Battery Charger

### LIVING AREA & CONSTRUCTION

- Oak Hardwood Frames & Doors
- Oak Vinyl Paneling
- Insulated Side-Walls
- Fiberglass Wet Shower w/Sink
- Bathroom Exhaust Fan
- Rear C.S. Closet
- 3-Burner Cooktop w/Oven
- Cabinet Storage Over Sofa
- Double Stainless Steel Sink w/High-Rise Faucet
- Flip-Up Galley Shelf
- Enhanced Galley Top w/Oak Trim
- Convertible Sofa w/Seat Belts
- Dining Table
- 55" x 64" Sleeping Area Over Cap
- Bunk Ladder
- Carpet Throughout
- Deluxe Power Driver Seat
- Deluxe Passenger Seat (Manual)
- Trim Panels On All Doors
- Fire Extinguisher
- Sewer Drain Hose & Holder
- Ozite Walls/Vinyl Ceiling
- Medicine Cabinet w/Mirror

12/01/97

# 1999 - AIRSTREAM 190 MH STANDARD FEATURES

## CHASSIS

rd 9400 GVWR E-350 Cargo Van w/Automatic  
4-Speed Transmission w/Overdrive  
8" Wheelbase  
Gallon (132.5L) Fuel Tank  
54 Rear End Ratio  
Indling Package  
10 Amp Alternator  
sulation Package, Deluxe  
245/75R x 16E BSW All Season Tires  
Anti-Lock Brakes - 4 Wheels

## AUTOMOTIVE EQUIPMENT

Swing-Out Glass on Side Front Cargo Door  
Windshield Wipers, Interval  
Power Door Locks & Windows  
Tilt Steering Wheel  
Cruise Control  
Dash Air Conditioner  
AM/FM/Cassette & Speakers  
Convenience Group Package  
Deluxe Engine Cover Console  
Driver/Passenger Air Bags  
Map Light in Driver's Area

## LIVING AREA & CONSTRUCTION

Oak Hardwood Frames & Doors  
Oak Vinyl Paneling  
Insulated Side-Walls  
Fiberglass Wet Shower w/Sink  
Bathroom Exhaust Fan  
Rear C.S. Closet  
3-Burner Cooktop w/Oven  
Cabinet Storage Over Sofa  
Double Stainless Steel Sink  
Adjustable Galley Shelf  
Enhanced Galley Top w/Oak Trim  
Convertible Sofa w/Seatbelts - 46" x 72"  
Dining Table w/Drink Holder (Mounts on Galley

## EXTERIOR FEATURES

Awning Package  
10V Exterior Outlet  
Aerodynamic Raised Fiberglass Top w/Front 1-pc  
Window - Color Matched to Van  
Exterior Graphics  
Chrome Front & Rear Bumpers  
Painted Slide-Open Safety Glass Windows w/Screens  
 Spare Tire w/Bracket Located Inside Rear Door  
 .S. Exterior Storage Compartment Below Floor  
 Center Brake Light  
 Port Wheel Covers

## SYSTEMS

11,000 BTU Air Conditioner w/Heat Strip  
Fantastic Roof Vent  
Generator Prep Kit w/Hour Meter  
TV Antenna Mounted in Roof  
12 Volt Interior Lighting  
35' Power Cord 110V Service  
30 Amp Converter w/12 Volt Charger  
6 Gallon Water Heater, 110V/LPG  
22.4 Gallon Fresh Water  
21.2 Gallon Grey Water Tank  
16.8 Gallon Black Water Tank  
Demand Water Pump System  
9.8 Gallon LPG Tank  
12,000 BTU Furnace  
3 Cu. Ft. Refrigerator  
Lockable Water Tank Fill  
Power Range Hood w/Light & Control Panel  
City Water Hook-Up  
Porch Light  
Prewired for Solar Battery Charger

Doors)  
65.5" x 80" Sleeping Area Over Cab  
Bunk Ladder  
Carpet Throughout  
Deluxe Power Driver Seat  
Deluxe Passenger Seat (Manual)  
Trim Panels on All Doors  
Fire Extinguisher  
Sewer Drain Hose & Holder  
Ozite Walls/Vinyl Ceiling  
Medicine Cabinet w/Mirror

11/20/98

Specifications are subject to change without notification.